



Loc-bil[®] Retentive System

This connection is specially designed for you and your patient. Feel the comfort and reliability.



Diamond-like carbon (DLC) has emerged as a potential material in recent years due to its high hardness, low frictional coefficient, high wear and corrosion resistance, chemical inertness, and excellent smoothness. All these properties match well with the criteria of a good biomaterial for applications in orthopedic, cardiovascular, or dentistry.

DLC coated locator abutments show less bacteria and calculus accumulation thanks to its scratch-free surface hardness and smoothness. It prevents abrasion of abutment and matrix inserts



SURFACE

Carbon-based coating offering diamond-like properties

Loc-bil[®] Retentive System

Designed for stability, durability and comfort

There are moments when you want a connection to be extremely reliable due to periimplantitis, looseness of the connection, or repetitive patient appointments. So far, hybrid prosthetic attachment systems could cause limitations in difficult implant situations. Now there is Loc-bil[®].

Loc-bil[®] Retentive System offers an innovative DLC abutment coating for hybrid prostheses that overcomes up to 70° implant divergence. Both straight and 15° angled abutments with 5 different gingival heights cover a wide variety of clinical implant situations. PEEK (polyetheretherketone) matrices provide a durable and reliable connection. This results in low maintenance and high patient comfort. Let your patients benefit from the reliability and durability of the Loc-bil[®] Retentive System.



PERFORMANCE

Excellent material, delivering high wear resistance and smoothness



FLEXIBILITY

Flexibility to compensate for poorly positioned implants



USABILITY

All components of the lock system are easy to use



PATIENT COMFORT

Provides much more comfort for your patient than other hybrid systems



QUALITY

Trust Loc-bil[®] quality and the science

Loc-bil[®] Retentive System

FLEXIBILITY

Loc-bil[®] Abutment, 15° angled

Restore situations with high implant divergence:

- * align a common prosthetic insertion axis up to 70° implant divergence
- * reduce unilateral stress and wear

USABILITY

Loc-bil[®] Abutments, straight and angled

- * Compatible with the standard screwdriver
- * Available on all platforms (Narrow and regular platform)
- * 5 gingiva heights for the straight and angled abutments

PATIENT COMFORT

- * Matrix audibly and tangibly snaps into place, ensuring correct seating of the prosthesis
- * Angled abutments align the prosthetic insertion axis enabling exact insertion
- * Small driver mechanism of abutments reduces accumulation of debris

PERFORMANCE

In combination the materials PEEK and DLC contribute to:

- * Excellent wear resistance
- * Exceptional long-term performance
- * Low maintenance
- * Low friction between abutment and matrix
- * PEEK matrix inserts offer excellent chemical and physical properties
- * Matrix accommodates upto 40° prosthetic insertion between two implants
- * 3 retention strengths offer optimal adjustment of the denture retention
- * Matrix housing available in titanium or color-neutral PEEK

SURFACE

DLC coatings offer several of the desired qualities of a diamond:

- * hardness
- * wear resistance
- * smooth surface and less plaque accumulation

Bone Level Straight and 15° Angled Loc-bil[®] Abutments



* All angled Loc-bil abutments are available in types A and B, where they can be seated on the implant in 8 different positions.

Retention Strength Test of Loc-bil[®] Attachment System

Group Name	Group 1	Group 2	Group 3
Colour Code	BLUE	GREEN	CREAM
Mean (N)	22,17	17,93	11,13
SD (±)	3,76	3,04	3,84

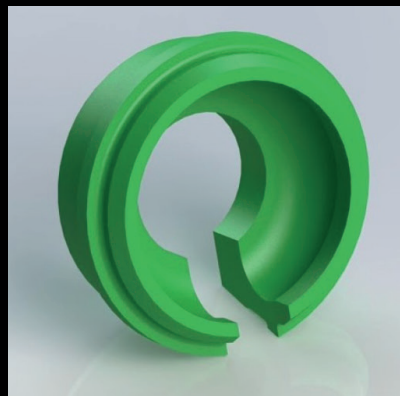
Table 1. Retention strength values of PEEK matrices

You have the choice between 3 retention inserts with different retention forces, which easily master divergences up to 20 degrees per implant. In combination with angled Loc-bil[®] abutments even 35° per implant.



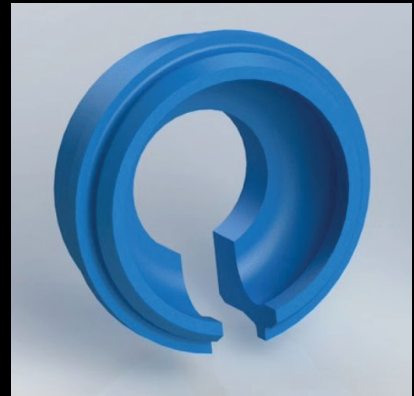
Light

1130 g



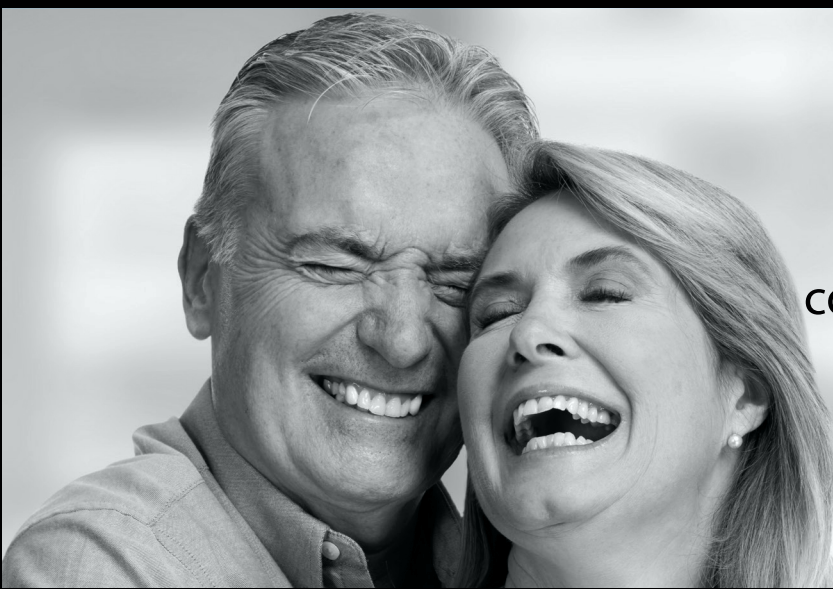
Medium

1820 g



Strong

2260 g



All our PEEK matrices are compatible with locator abutments of other implant systems

Loc-bil[®] Retentive System

This connection is specially designed for you and your patient.
Feel the comfort and reliability.

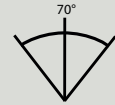


DLC SURFACE

DLC coated locator abutments show no bacteria and calculus accumulation thanks to its scratch-free surface hardness and smoothness. It prevents abrasion of abutment and matrix inserts

COMPENSATION OF IMPLANT ANGLULATION

Loc-bil[®] Abutment is 15° angled implant divergence up to 70° can be compensated



GINGIVA HEIGHTS

There is 5 gingiva heights for the straight and angled abutments



PEEK MATRICES

PEEK attachments offered sufficient retention for long-term use over 30,000 insertion-separating cycles, both for orthogonal and tilted implants.



PERFORMANCE

Excellent material, delivering high wear resistance and smoothness



FLEXIBILITY

Flexibility to compensate for poorly positioned implants



USABILITY

All components of the lock system are easy to use



PATIENT COMFORT

Provides much more comfort for your patient than other hybrid systems

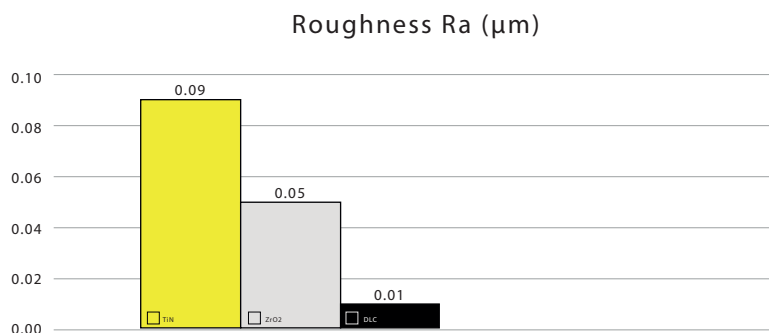


QUALITY

Trust Loc-bil[®] quality and the science

The comparison between the physical properties of the various coatings shows that the DLC coating outperforms the others. This allows clinicians, dental technicians, and more importantly patients to benefit from less care, less hassle and more comfort.

Surface roughness (Ra) values of retentive abutments for implant-supported overdentures



TiN: Titanium Nitride **ZrO₂:** Zirconium dioxide **DLC:** Diamond-like carbon

The roughness of a surface area is indicated by the roughness parameter Ra – the smaller the parameter value the smoother the surface. A smooth abutment surface is less abrasive against the retention inserts and contributes to longevity.

10-year guarantee: Be safe !

The quality of Loc-bil[®] abutments has been proven by in vitro and clinical studies. Over a period of ten years we will, if necessary, replace your Loc-bil[®] abutments*.

**Subject to the guarantee conditions of B6Pro[®]. Matrices and PEEK retention inserts are not covered by the guarantee as these are subject to natural wear and tear.*



Passion for Excellence



 **b6pro**[®]

German Dental Implant Systems

Imposs Medical GmbH
Grafenberger Allee 293
40237 Düsseldorf - GERMANY
info@b6pro.com



For more information on Loc-bil[®] retentive system,
please contact our B6Pro[®] dealers.